



**GB Equipment Systems Ltd.**

**— WE CARE —**

Manufacturers of: Medical,  
Automotive & Railway Equipment



**Quality That Heals, Innovation That Travels -  
Empowering Healthcare Worldwide**

# Welcome Note

## Welcome to the World of GB

### *Where Precision Meets Compassion*

I take this opportunity to introduce to you, GB Equipment Systems Limited – a company dedicated to precision and reliability in single-use medical devices. At the GB Group, a legacy started by Late Shri Amrit Lal Gupta, we have long stood for excellence across critical industries. Today, we extend that legacy into the world of medical care – bringing our manufacturing expertise, ethical responsibility and relentless pursuit of quality to the service of global healthcare. We believe that the backbone of quality healthcare lies in the details.

Whether it's a rural clinic or an urban hospital, our mission is simple: to deliver trustworthy medical devices that empower healthcare professionals and protect lives – everywhere.

We are proud to be a silent force behind global healing.

Mr. Vineet Kumar Gupta  
Chairman, GB Group of Companies



## About GB Medical

### Your Trusted Partner in Global Healthcare

GB Medical is the healthcare division of GB Equipment Systems Ltd., a globally recognised Indian manufacturer of precision-engineered products. With a strong foundation in sectors like Railways, Energy, and Infrastructure, we now bring the same world-class quality and innovation to medical device manufacturing.

From single-use syringes and IV infusion sets to surgical gloves, every GB Medical product is designed for reliability, manufactured in advanced facilities, and tested to meet stringent international standards.

---

#### **Our Facilities:**

State-of-the-art cleanrooms | Automated manufacturing lines | Global compliance certifications

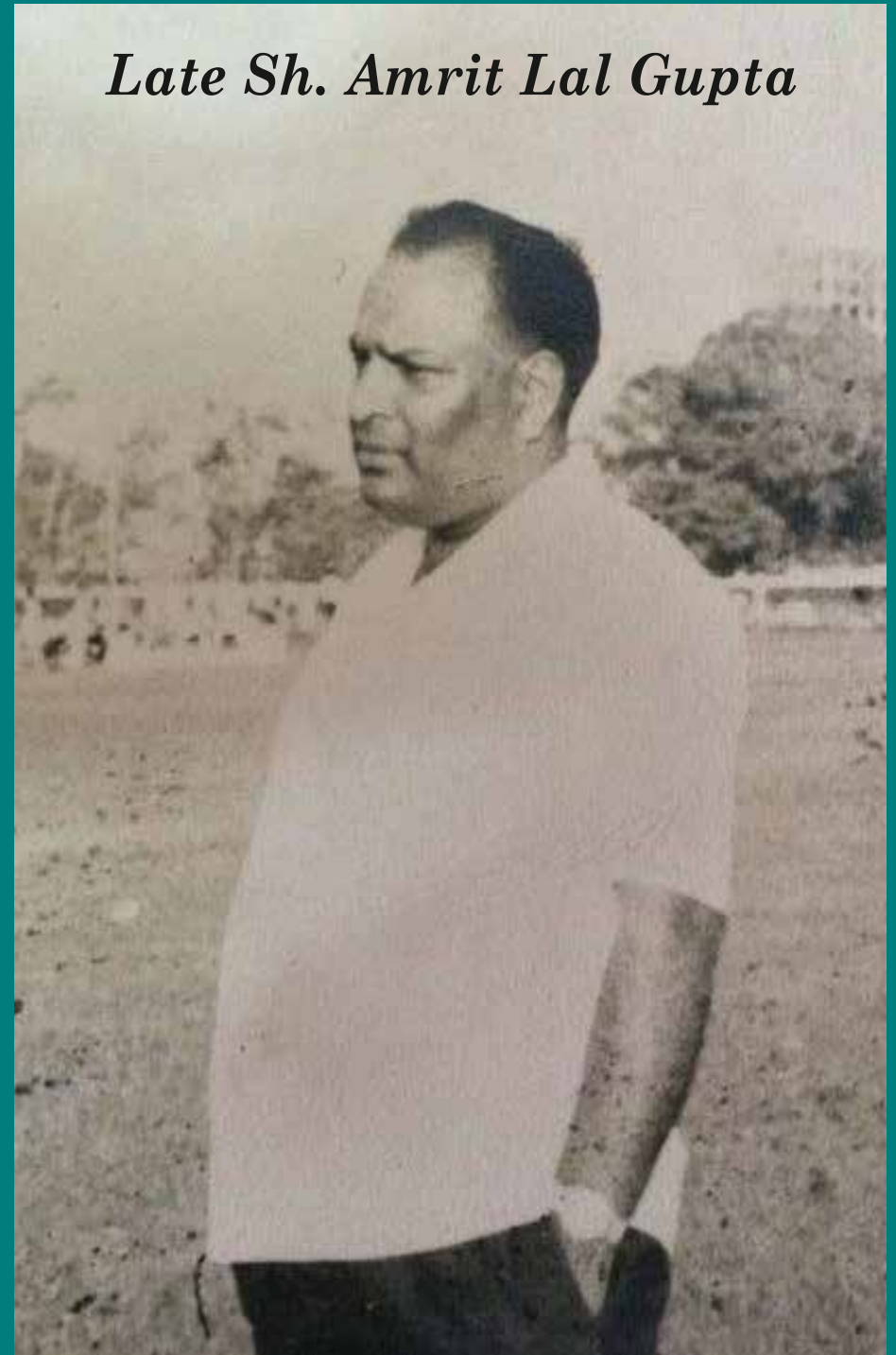
#### **Our Reach:**

Supplying to clients across the globe.

#### **Our Commitment:**

Safe, sterile, and superior products that support caregivers and protect patients.

## *Late Sh. Amrit Lal Gupta*



**GB Equipment Systems Ltd.**

## Our Core Values

- ▶ Integrity – We do what's right, even when no one is watching.
- ▶ Innovation – We continuously improve, adapt, and evolve.
- ▶ Responsibility – To people, to the planet, and to the profession.
- ▶ Excellence – Not a goal, but a standard in everything we do.

## Our Mission

- ▶ To manufacture safe, affordable, and high-quality medical devices that improve health outcomes across the world.
- ▶ To support healthcare professionals with products they can trust, every single time.
- ▶ To innovate responsibly and contribute to global health systems with purpose and precision.
- ▶ To be a global symbol of reliability, rooted in Indian manufacturing excellence.



# Company Overview

At the GB Group, we believe our people are our strongest asset and the driving force behind our continued growth and innovation. We are committed to building a work culture rooted in safety, inclusivity, and continuous learning—fostering an environment where passion meets purpose and every team member is empowered to thrive, contribute meaningfully, and grow alongside the organization.



Our Corporate Social Responsibility (CSR) initiatives reflect our deep commitment to sustain ability, community welfare, and environmental responsibility. From ensuring safe and healthy workplaces to investing in healthcare, education, and skill development, we strive to create long-term value – not just for our employees, but for the communities we serve and the world we share.



# Quality Certificate 1



ZERTIFIKAT ♦ CERTIFICATE ♦ 認證證書 ♦ CERTIFICADO ♦ CERTIFICAT



## CERTIFICATE

No. QS6 130335 0003 Rev. 00

### Regulatory Requirements: Audit/Certification Criteria

#### Australia

Therapeutic Goods (Medical Devices) Regulations 2002  
- Schedule 3, Part 1 (excluding Part 1.6) – Full Quality Assurance Procedure

#### Brazil

- RDC ANVISA n. 665/2022 - Good Manufacturing Practices  
- RDC ANVISA n. 551/2021  
- RDC ANVISA n. 67/2009 - Vigilance

#### Canada

- Medical Device Regulations – Part 1- SOR 98/282

#### Japan

- MHLW Ministerial Ordinance No. 169 (2004), as amended by MHLW Ministerial Ordinance No.60 (2021)  
- Japan PMD Act (as applicable)

#### United States

- 21 CFR Part 803  
- 21 CFR Part 806  
- 21 CFR Part 807 – Subparts A to D  
- 21 CFR Part 820

### Facility(ies):

#### G. B. Equipment Systems Limited

C-11/2/2, Selaqui Industrial Area, Selaqui, Dehradun, Uttarakhand 248011, INDIA

### Facility Scopes:

Design, Development, Manufacturing and Distribution of Sterile and Non-Sterile Medical Devices for Injection, Infusion and Transfusion

REPs Facility ID: F008347

Page 2 of 2  
Date of Issue: 2026-03-27

( Renee Walker )  
Director, US Certification Body, MHS

# Quality Certificate 2




ZERTIFIKAT ◆ CERTIFICATE ◆ 認證書 ◆ CERTIFICADO ◆ CERTIFICAT



## CERTIFICATE

No. QS6 130335 0003 Rev. 00

**Certificate Holder:** G. B. Equipment Systems Limited  
C-11/2/2, Selaqui Industrial Area, Selaqui  
Dehradun, Uttarakhand 248011  
INDIA

**Certification Mark:** 

**Scope of Certificate:** Design, Development, Manufacturing and Distribution  
of Sterile and Non-Sterile Medical Devices for Injection,  
Infusion and Transfusion

**Standard(s):** ISO 13485:2016

**Regulatory Authority(ies):** Australia TGA, Brazil ANVISA, Health Canada, Japan  
MHLW / PMDA, USA FDA. See attached for listing of  
specific regulatory requirements.

The Certification Body of TÜV SÜD America Inc. certifies that the quality management system of the manufacturer listed above has been audited against the stated criteria and found to conform to those criteria for the scope of certification listed. For details and certificate validity see:  
[www.tuvsud.com/ps-cert?q=cert:QS6\\_130335\\_0003\\_Rev\\_00](http://www.tuvsud.com/ps-cert?q=cert:QS6_130335_0003_Rev_00)  
TÜV SÜD America Inc. is an MDSAP Recognized Auditing Organization.

**REPs Facility ID:** F008347  
**Report No.:** TPS7307  
**Effective Date:** 2026-03-13  
**Expiry Date:** 2029-03-12

Page 1 of 2  
Date of Issue: 2026-03-27

( Renee Walker )  
Director, US Certification Body, MHS

# Quality Certificate 3



ZERTIFIKAT ◆ CERTIFICATE ◆ 認證證書 ◆ CERTIFICADO ◆ CERTIFIKAT ◆ CERTIFICATE



Product Service

## Certificate

No. Q5 130335 0001 Rev. 00

**Holder of Certificate:** **G. B. Equipment Systems Limited**  
C-11/2/2, Selaqui Industrial Area, Selaqui  
Dehradun, Uttarakhand 248011  
INDIA

**Facility(ies):** **G. B. Equipment Systems Limited**  
C-11/2/2, Selaqui Industrial Area, Selaqui, Dehradun, Uttarakhand  
248011, INDIA

See Scope of Certificate

**Certification Mark:**



**Scope of Certificate:** **Design, Development, Manufacturing and Distribution of sterile and non sterile medical devices for injection, infusion & transfusion**

**Applied Standard(s):** ISO 13485:2016  
(EN ISO 13485:2016/AC:2018, EN ISO 13485:2016/A11:2021)  
Medical devices - Quality management systems - Requirements for regulatory purposes

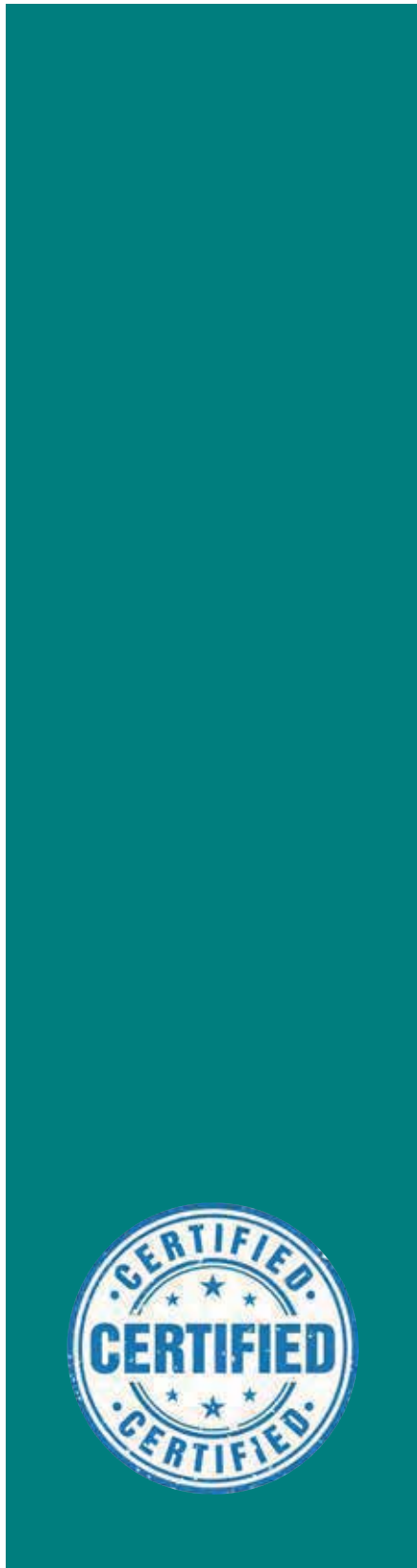
The Certification Body of TÜV SÜD Product Service GmbH certifies that the company mentioned above has established and is maintaining a quality management system, which meets the requirements of the listed standard(s). All applicable requirements of the Testing, Certification, Validation and Verification Regulations TÜV SÜD Group have to be complied with. For details and certificate validity see: [www.tuvsud.com/ps-cert?q=cert:Q5 130335 0001 Rev. 00](http://www.tuvsud.com/ps-cert?q=cert:Q5_130335_0001_Rev_00)

**Report No.:** TPS7307  
**Valid from:** 2026-04-23  
**Valid until:** 2029-04-22

**Date,** 2026-04-23

Christoph Dicks  
Head of Certification/Notified Body

# Quality Certificate 4



# BSCIC

## Certificate

MEDICAL DEVICE -  
QUALITY MANAGEMENT SYSTEM

This is to certify that:

### GB EQUIPMENT SYSTEMS LTD.

C-11/2/2, SELAQUI INDUSTRIAL AREA, SELAQUI  
DEHRADUN - 248011, UTTARAKHAND, INDIA

Hereby granted the Certificate Number: **BN22590/21450**

Rev. 00

Subsequent to the Assessment of the organization, it has been found to be operating a Medical Device-  
Quality Management System which complies with the requirements of

### ISO 13485:2016

For the following scope:

**Design & Development, Manufacturing and Supply of Sterile /Non-Sterile  
Medical Devices for Injection, Infusion, Transfusion and Personnel Protection**

Technical Area: General Non-Active, Non-Implantable Medical Devices, Non-Active Devices for  
Anesthesia, Emergency and Intensive Care, A.1.1.1,  
Non-Active Devices for Injection, Infusion, Transfusion and Dialysis, A.1.1.2

For BSCIC CERTIFICATIONS PVT.LTD.	Originally Registered:	08-Nov-2023	1st Surveillance Due on: 07-Nov-2024
	Issue Date:	08-Nov-2023	2nd Surveillance Due on: 07-Nov-2025
	Expiry Date:	07-Nov-2026	

Sanjay Seth  
Managing Director

(In case if Surveillance Audit is not allowed to be conducted; this Certificate shall be  
Suspended/Withdrawn).

Please Re-validate this certificate's status at [www.bsc-icc.com](http://www.bsc-icc.com) at REGISTRATION STATUS.  
This Certificate of Registration is granted subject to relevant provisions of the BSCIC Certifications PVT. LTD. Contract Terms & Scheme for  
Registration Form B018 (Latest Version). Please see B018 at our website [www.bsc-icc.com](http://www.bsc-icc.com).  
The certificate of Registration remains the property of BSCIC Certifications Pvt. Ltd. and shall be returned immediately upon request.  
BSCIC Headquarters: 8work, 1st Floor, 5B/15A, Crown Plaza Mall, Faridabad - 121 007, Haryana, India.

Page 1 of 1





# PRODUCT LIST

## STERILE HYPODERMIC SYRINGE

Page No. 11-15

- GB Maxim, GB Med, GB Safe, GB Insulin, GB Auto Disable Syringe
- Sterile Hypodermic Needle - GB Maxim

## STERILE SURGICAL GLOVES

Page No. 17-24

- SG-21 Pro, GB Care, GB Gyno, GB Safe
- Medical Examination Gloves - GB Examine

## ANTISEPTIC & DISINFECTANTS

Page No. 25-29

- GB Dine, GB Lon, GB Alcohol Swabs

## GB DRIP

Page No. 31-32

- GB DRIP Safe, GB DRIP Safe Pro

## GB MEASURE VOLUME SETS

Page No. 33-36

- GB Pedia Regular, GB Pedia Standard, GB Flow Safe, Extension Line

## GB UROLOGY

Page No. 37-39

- GB Uro Bag, GB Uro Bag Plus, GB UroScale, GB UroSafe

## GB FEEDING TUBES

Page No. 40-41

- GB FeedSafe, GB InfantSafe

## GB BREATHE

Page No. 42-44

- GB Lung Exerciser, GB Aerosol Mask, GB Nasal Cannula, GB Infant Cannula

# STERILE HYPODERMIC SYRINGES

**GB MAXIM<sup>®</sup>**  
STERILE HYPODERMIC SYRINGE

**GB MED**  
STERILE HYPODERMIC SYRINGE

**GB SAFE<sup>®</sup>**  
STERILE HYPODERMIC SYRINGE

## **Sterile, Non-Toxic, Non-Pyrogenic, Single use only, E.T.O.**

Manufactured using premium quality cold-rolled stainless steel strips with the latest technology, Hypodermic needles are ground on high-precision machines, assembled and packed in completely automated machines. The vision cameras installed ensure 100% automated quality control, enabling superior sharpness to minimize pain.

Hypodermic Syringe with Needle is used for the administration of the injectable fluids-Intra vascular/Intra muscular and to withdraw blood samples for pathological purpose. It contains a Barrel, Plunger, Gasket & Hypodermic Needle with protector cap.



# STERILE HYPODERMIC SYRINGE

**Sterile, Non-Toxic, Non-Pyrogenic, Single use only, E.T.O.**

Hypodermic Syringe With Needle is used for the administration of the injectable fluids, Intra vascular/ Intra muscular and to withdraw blood samples for pathological purposes. It contains a Barrel, Plunger, Gasket & a Hypodermic Needle with Protector cap.

## SALIENT FEATURES

- Sterile, Non-Toxic, Non-Pyrogenic, Single use only, E.T.O.
- Available in 1ml, 2ml, 3ml, 5ml, 10ml, 20ml & 50ml with & without needle.
- Manufactured with Non-toxic medical grade Polypropylene, Thermoplastic Elastomer and Stainless Steel
- Packed: Ribbon or Blister Package

## VARIANTS

S.No.	Product Name	Size	Type of Packing	Pcs Per Shelf boxes	Pcs per Carton
1	GB Maxim with Needle	0.5 ml	Ribbon/Blister	100	2000
2	GB Maxim with Needle	1 ml	Ribbon/Blister	100	2000
3	GB Maxim with Needle	2 ml	Ribbon/Blister	100	2000
4	GB Maxim with Needle	3 ml	Ribbon/Blister	100	2000
5	GB Maxim with Needle	5 ml	Ribbon/Blister	100	2000
6	GB Maxim with Needle	10 ml	Ribbon/Blister	50	1000
7	GB Maxim with Needle	20 ml	Ribbon/Blister	25	500
8	GB Maxim with Needle	50 ml	Ribbon/Blister	10	200
9	GB Maxim with Needle	100 ml	Ribbon/Blister	05	100

S.No.	Product Name	Size	Type of Packing	Pcs Per Shelf boxes	Pcs per Carton
1	GB Maxim without Needle	0.5 ml	Ribbon/Blister	100	2000
2	GB Maxim without Needle	1 ml	Ribbon/Blister	100	2000
3	GB Maxim without Needle	2 ml	Ribbon/Blister	100	2000
4	GB Maxim without Needle	3 ml	Ribbon/Blister	100	2000
5	GB Maxim without Needle	5 ml	Ribbon/Blister	100	2000
6	GB Maxim without Needle	10 ml	Ribbon/Blister	50	1000
7	GB Maxim without Needle	20 ml	Ribbon/Blister	25	500
8	GB Maxim without Needle	50 ml	Ribbon/Blister	10	200
9	GB Maxim without Needle	100 ml	Ribbon/Blister	05	100

COMPONENT	MATERIAL
Barrel	Polypropylene
Plunger	Polypropylene
Gasket	Thermoplastic Elastomer
Needle	Stainless Steel

## PRECAUTIONS

- Do not use if packing is damaged.
- Do not use with injectables that react with plastic.
- Do not resterilize.
- Contents of unopened pack are sterile.
- Check the syringe for visual defect/crack before using to avoid loss of medication.
- Discard the set after single use or if found leaking.
- Do not use device after shelf life expires.



## VARIANTS

S.No.	Product Name	Size	Type of Packing	Pcs Per Shelf Boxes	Pcs per Carton
1	GB Med with Needle	0.5 ml	Ribbon/Blister	100	2000
2	GB Med with Needle	1 ml	Ribbon/Blister	100	2000
3	GB Med with Needle	2 ml	Ribbon/Blister	100	2000
4	GB Med with Needle	3 ml	Ribbon/Blister	100	2000
5	GB Med with Needle	5 ml	Ribbon/Blister	100	2000
6	GB Med with Needle	10 ml	Ribbon/Blister	50	1000
7	GB Med with Needle	20 ml	Ribbon/Blister	25	500
8	GB Med with Needle	50 ml	Ribbon/Blister	10	200
9	GB Med with Needle	100 ml	Ribbon/Blister	05	100

S.No.	Product Name	Size	Type of Packing	Pcs Per Shelf Boxes	Pcs per Carton
1	GB Med without Needle	0.5 ml	Ribbon/Blister	100	2000
2	GB Med without Needle	1 ml	Ribbon/Blister	100	2000
3	GB Med without Needle	2 ml	Ribbon/Blister	100	2000
4	GB Med without Needle	3 ml	Ribbon/Blister	100	2000
5	GB Med without Needle	5 ml	Ribbon/Blister	100	2000
6	GB Med without Needle	10 ml	Ribbon/Blister	50	1000
7	GB Med without Needle	20 ml	Ribbon/Blister	25	500
8	GB Med without Needle	50 ml	Ribbon/Blister	10	200
9	GB Med without Needle	100 ml	Ribbon/Blister	05	100

# STERILE HYPODERMIC SYRINGE

**Sterile, Non-Toxic, Non-Pyrogenic, Single use only, E.T.O.**

Hypodermic Syringe With Needle is used for the administration of the injectable fluids, Intra vascular/Intra muscular and to withdraw blood samples for pathological purposes. It contains a Barrel, Plunger, Gasket & a Hypodermic Needle with Protector cap.

### SALIENT FEATURES

- Sterile, Non-Toxic, Non-Pyrogenic, Single use only, E.T.O.
- Available in 1ml, 2ml, 3ml, 5ml, 10ml, 20ml & 50ml with & without needle.
- Manufactured with Non-toxic medical grade Polypropylene, Thermoplastic Elastomer and Stainless Steel
- Packed: Ribbon or Blister Package

COMPONENT	MATERIAL
Barrel	Polypropylene
Plunger	Polypropylene
Gasket	Thermoplastic Elastomer
Needle	Stainless Steel

### PRECAUTIONS

- Do not use if packing is damaged.
- Do not use with injectables that react with plastic.
- Do not resterilize.
- Contents of unopened pack are sterile.
- Check the syringe for visual defect/crack before using to avoid loss of medication.
- Discard the set after single use or if found leaking.
- Do not use device after shelf life expires.



# STERILE HYPODERMIC SYRINGE

**Sterile, Non-Toxic, Non-Pyrogenic,  
Single use only, E.T.O.**

Hypodermic Syringe With Needle is used for the administration of the injectable fluids, Intra vascular/ Intra muscular and to withdraw blood samples for pathological purposes. It contains a Barrel, Plunger, Gasket & a Hypodermic Needle with Protector cap.

## SALIENT FEATURES

- Sterile, Non-Toxic, Non-Pyrogenic, Single use only, E.T.O.
- Available in 1ml, 2ml, 3ml, 5ml, 10ml, 20ml & 50ml with & without needle.
- Manufactured with Non-toxic medical grade Polypropylene, Thermoplastic Elastomer and Stainless Steel
- Packed: Ribbon or Blister Package

## VARIANTS

S.No.	Product Name	Size	Type of Packing	Pcs Per Shelf boxes	Pcs per Carton
1	GB Safe with Needle	0.5 ml	Ribbon/Blister	100	2000
2	GB Safe with Needle	1 ml	Ribbon/Blister	100	2000
3	GB Safe with Needle	2 ml	Ribbon/Blister	100	2000
4	GB Safe with Needle	3 ml	Ribbon/Blister	100	2000
5	GB Safe with Needle	5 ml	Ribbon/Blister	100	2000
6	GB Safe with Needle	10 ml	Ribbon/Blister	50	1000
7	GB Safe with Needle	20 ml	Ribbon/Blister	25	500
8	GB Safe with Needle	50 ml	Ribbon/Blister	10	200
9	GB Safe with Needle	100 ml	Ribbon/Blister	05	100

S.No.	Product Name	Size	Type of Packing	Pcs Per Shelf boxes	Pcs per Carton
1	GB Safe without Needle	0.5 ml	Ribbon/Blister	100	2000
2	GB Safe without Needle	1 ml	Ribbon/Blister	100	2000
3	GB Safe without Needle	2 ml	Ribbon/Blister	100	2000
4	GB Safe without Needle	3 ml	Ribbon/Blister	100	2000
5	GB Safe without Needle	5 ml	Ribbon/Blister	100	2000
6	GB Safe without Needle	10 ml	Ribbon/Blister	50	1000
7	GB Safe without Needle	20 ml	Ribbon/Blister	25	500
8	GB Safe without Needle	50 ml	Ribbon/Blister	10	200
9	GB Safe without Needle	100 ml	Ribbon/Blister	05	100

COMPONENT	MATERIAL
Barrel	Polypropylene
Plunger	Polypropylene
Gasket	Thermoplastic Elastomer
Needle	Stainless Steel

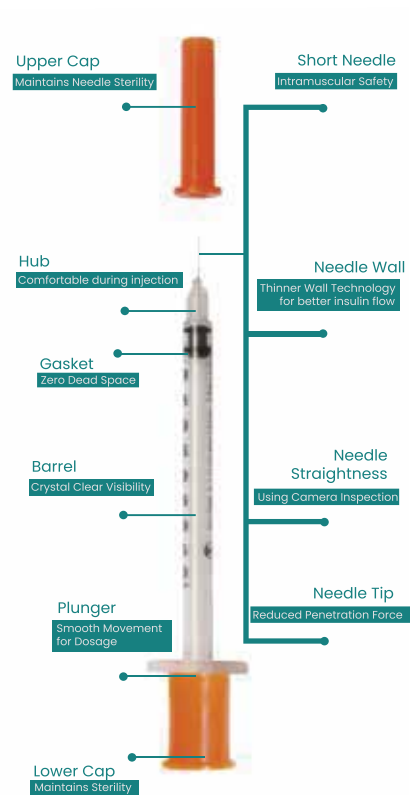
## PRECAUTIONS

- Do not use if packing is damaged.
- Do not use with injectables that react with plastic.
- Do not resterilize.
- Contents of unopened pack are sterile.
- Check the syringe for visual defect/crack before using to avoid loss of medication.
- Discard the set after single use or if found leaking.
- Do not use device after shelf life expires.

# GB INSULIN

## Disposable Insulin Syringe

- It provides a hygienic solution for administering insulin injections to diabetes patients.
- It comes in various sizes with clear markings, allowing for accurate and precise dosing.



### GB MAXIM (U-40 & U100)

#### Disposable Insulin Syringe

- Manufactured from medical grade, non-toxic, virgin polypropylene.
- Prominent graduation ensures dosage accuracy.
- Gaskets made of medical grade latex free compounds.
- Sterile, disposable, non-pyrogenic individually packed.
- Available in 10 pcs-pouch/individually ribbon packed.
- Needle is integrated with barrel through U.V bonding.
- Available in U-40 and U-100 versions.

# GB AD

## Auto Disable Syringe

- Auto Disable Syringe for patient safety in the immunization
- Sector, a syringe that breaks automatically if you try to re-use it.



#### KEY BENEFITS

- Significantly helps reduce infections due to unsafe injections.
- Reduces health-care costs at a macro-level.
- Reduces average stay of patient in hospital.
- Usage of fixed needle syringes assures that neither syringes nor the needle can be used again.

# STERILE HYPODERMIC NEEDLE

Sterile Hypodermic Needles are used for general purpose of injection/aspiration and channelizing of liquids/fluids (biological fluids blood, etc. and/or medicaments) from vials, ampoules etc. and are meant for single use only.

## STERILIZATION AND SHELF LIFE

### Sterilization

EtO (Ethylene oxide)

STERILE EO

### Single-use only



### Shelf life

5 Years



COMPONENT	MATERIAL
Hub	Polypropylene
Needle	Polypropylene
Cannula	Stainless Steel

## PRECAUTIONS

Check the integrity of each primary unit pack before use.  
Do not resterilize.  
Do not reuse the device as this may lead to infection to the user & patient both.  
Discard the set after single use or if found leaking.



## SALIENT FEATURES

- Ultra sharp three-beveled needle
- Siliconization on lancet point minimizes penetration and gliding force
- Available in thin or regular wall
- Color-coded to conform to ISO 6009
- Stainless steel cannula protected by needle cap
- Latex-free, PVC-free
- For use by healthcare professionals only

## PRODUCT COMPLIANCE

- ISO 80369-7
- EN ISO 9626 + A1
- ISO 7864
- ISO 6009
- ISO 13485
- ISO 15223-1

# NEEDLES

S.No.	Product Name	Gauge x Size	Type of Packing	Pcs Per Inner boxes	Pcs per Carton
1	GB Hypodermic Needle	16 G X 1.5"	Blister	100	10,000
2	GB Hypodermic Needle	16 G X 1.25"	Blister	100	10,000
3	GB Hypodermic Needle	16 GX 1"	Blister	100	10,000
4	GB Hypodermic Needle	18 G X 1.5"	Blister	100	10,000
5	GB Hypodermic Needle	18 G X 1.25"	Blister	100	10,000
6	GB Hypodermic Needle	18 GX 1"	Blister	100	10,000
7	GB Hypodermic Needle	19 GX 1.5"	Blister	100	10,000
8	GB Hypodermic Needle	19 GX 1.25"	Blister	100	10,000
9	GB Hypodermic Needle	19 GX 1"	Blister	100	10,000
10	GB Hypodermic Needle	20 G X 1.5"	Blister	100	10,000
11	GB Hypodermic Needle	20 GX 1.25"	Blister	100	10,000
12	GB Hypodermic Needle	20 GX 1"	Blister	100	10,000
13	GB Hypodermic Needle	21 G X 1.5"	Blister	100	10,000
14	GB Hypodermic Needle	21 G X 1.25"	Blister	100	10,000
15	GB Hypodermic Needle	21 GX 1"	Blister	100	10,000
16	GB Hypodermic Needle	22 G X 1.5"	Blister	100	10,000
17	GB Hypodermic Needle	22 G X 1.25"	Blister	100	10,000
18	GB Hypodermic Needle	22 G X 1"	Blister	100	10,000
19	GB Hypodermic Needle	23 G X 1.5"	Blister	100	10,000
20	GB Hypodermic Needle	23 G X 1.25"	Blister	100	10,000
21	GB Hypodermic Needle	23 GX 1"	Blister	100	10,000
22	GB Hypodermic Needle	24 G X 1.5"	Blister	100	10,000
23	GB Hypodermic Needle	24 G X 1.25"	Blister	100	10,000
24	GB Hypodermic Needle	24 GX 1"	Blister	100	10,000
25	GB Hypodermic Needle	25 G X 1.5"	Blister	100	10,000
26	GB Hypodermic Needle	25 G X 1.25"	Blister	100	10,000
27	GB Hypodermic Needle	25 G X 1"	Blister	100	10,000
28	GB Hypodermic Needle	26 G X 1.5"	Blister	100	10,000
29	GB Hypodermic Needle	26 G X 1.25"	Blister	100	10,000
30	GB Hypodermic Needle	26 G X 1"	Blister	100	10,000
31	GB Hypodermic Needle	27 G X 1.5"	Blister	100	10,000
32	GB Hypodermic Needle	27 G X 1.25"	Blister	100	10,000
33	GB Hypodermic Needle	27 GX 1"	Blister	100	10,000
34	GB Hypodermic Needle	28 G X 1.5"	Blister	100	10,000
35	GB Hypodermic Needle	28 G X 1.25"	Blister	100	10,000
36	GB Hypodermic Needle	28 GX 1"	Blister	100	10,000
37	GB Hypodermic Needle	29 G X 1.5"	Blister	100	10,000
38	GB Hypodermic Needle	29 G X 1.25"	Blister	100	10,000
39	GB Hypodermic Needle	29 GX 1"	Blister	100	10,000
40	GB Hypodermic Needle	30 G X 1.5"	Blister	100	10,000
41	GB Hypodermic Needle	30 G X 1.25"	Blister	100	10,000
42	GB Hypodermic Needle	30 GX 1"	Blister	100	10,000





# GB SG-21<sup>®</sup> PR<sup>+</sup>

Sterile Latex Surgical Gloves (Powdered)  
Sterile Latex Surgical Gloves (Powder-Free)  
Non Sterile Latex Surgical Gloves (Powdered)  
Non Sterile Latex Surgical Gloves (Powder-Free)



MEDICAL



INDUSTRIAL  
PURPOSE



LAB



HEALTHCARE  
& NURSING



GENERAL  
HOUSEKEEPING



IT  
INDUSTRY

# STERILE GLOVES

# Sterile Latex Surgical Gloves (Powder Free)

Sterilized in a validated process cycle to achieve sterility assurance level 10, and air wash cycle to reduce sterilant residue to less than 4mg/unit.

## TECHNICAL SPECIFICATION

- Material - Natural Rubber Latex
- Hand specific; curved fingers; beaded cuff; natural ; textured surface
- Extractable Protein Level- <200 microgram/ dm<sup>2</sup>
- Sterilization - Ethylene Oxide
- Shelf Life- 3 years from the date of manufacture
- Storage condition- Shall be stored in a cool, dry place and away from sun light

## QUALITY STANDARDS

- Manufactured in a clean environment to achieve low bio burden level prior to sterilization. This achieves low pyrogen level after sterilization.
- Manufactured in a clean environment to comply with EN 556 & ISO 13485 requirement.



GLOVES

# Sterile Latex Surgical Gloves (Powdered)

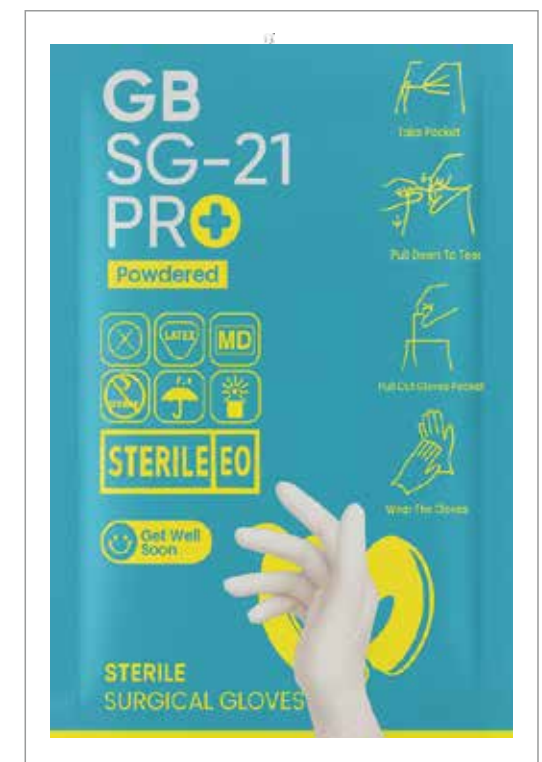
Sterilized in a validated process cycle to achieve sterility assurance level 10, and air wash cycle to reduce sterilant residue to less than 4mg/unit.

## TECHNICAL SPECIFICATION

- Material - Natural Rubber Latex
- Hand specific; curved fingers; beaded cuff; natural; textured surface
- Type: Powdered Latex Surgical Gloves
- Powder Content- 10mg/dm<sup>2</sup>
- Extractable Protein Level - <92 microgram/dm<sup>2</sup>
- Sterilization - Ethylene Oxide
- Shelf Life- 3 years from the date of manufacture
- Storage condition- Shall be stored in a cool, dry place and away from sun light

## QUALITY STANDARDS

- Manufactured in a clean environment to achieve low bio burden level prior to sterilization. This achieves low Pyrogen level after sterilization.
- Manufactured in a clean environment to comply with EN 556 & ISO 13485 requirement.



# GB CARE

Sterile Latex Surgical Gloves (Powdered)  
Sterile Latex Surgical Gloves (Powder-Free)  
Non Sterile Latex Surgical Gloves (Powdered)  
Non Sterile Latex Surgical Gloves (Powder-Free)



MEDICAL



INDUSTRIAL  
PURPOSE



LAB



HEALTHCARE  
& NURSING



GENERAL  
HOUSEHOLD



INDUSTRY

# Latex Surgical Gloves Pre-Powdered

GB Care pre-powdered gloves are made from natural rubber latex. The glove is anatomically shaped with thumb ball effect, reducing hand fatigue during surgical procedures. The precision design fit and micro rough surface provides optimum comfort and better instrument grip without compromising on sensitivity. Pre-powdered gloves provide excellent barrier protection for both doctor and patient.

## FEATURES

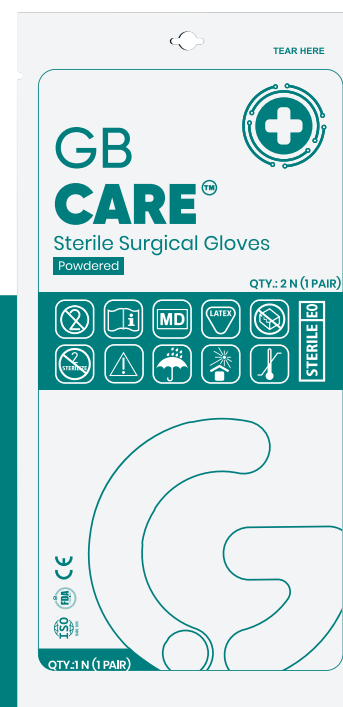
- Sterilized in a validated process cycle to achieve sterility assurance level 10 and air wash cycle to reduce sterilant residue to less than 4mg/unit.
- Chemical residue almost nil, eliminates risk of contact dermatitis - Type IV Allergy.
- Lightly powdered with modified bio-absorbable corn starch to prevent wound infection and granulomas.
- The protein content is less than 200ug/dm<sup>2</sup> to reduce the risk of user being sensitized to latex protein allergy Type 1.

## QUALITY STANDARDS

- Manufactured in a clean environment to achieve low bio burden level prior to sterilization. This achieves low pyrogen level after sterilization.
- Manufactured in a clean environment to comply with EN 556 & ISO 13485 requirement.



GLOVES



# Latex Surgical Gloves Powder-Free

Powder-free latex surgical gloves are made from natural rubber latex. The powder free gloves eliminate all risk associated with powder. The glove is anatomically shaped with thumb ball effect, reducing hand fatigue during surgical procedures. It provides excellent barrier protection for both doctor and patient.

## FEATURES

- Latex protein no more than 50ug of protein per gram and dm, eliminate risk of latex allergy- Type 1.
- Chemical residue almost nil, eliminates risk of Contact Dermatitis - Type IV Allergy.
- Absence of powder eliminates dangers associated with powder, preventing granulomas, adhesions, fibrosis and occupational asthma.
- Does not contaminate sterile work area.
- Latex film structure passes Viral Penetration Test (ASTM F1671:2007).

## QUALITY STANDARDS

- Manufactured in a clean environment to achieve low bio burden level prior to sterilization. This achieves low pyrogen level after sterilization.
- Manufactured in a clean environment to comply with EN 556 & ISO 13485 requirement.



# Non Sterile Surgical Gloves

Non sterile latex examination gloves are made with natural rubber latex. These gloves provide excellent barrier protection for both healthcare worker and patient.

## FEATURES

- Enhanced elasticity, tear strength and donning of powderfree gloves.
- Beaded cuff with minimum length of 240mm. It can offer 290mm length also.
- Latex protein is not more than 50ug of protein per dm<sup>2</sup>, eliminates risk of Latex Allergy - Type 1.
- Absence of powder eliminates dangers associated with powder, preventing granulomas, adhesions, fibrosis and occupational asthma.
- It does not contaminate sterile work area.

## QUALITY STANDARDS

- Sterilized in a validated process cycle as per ISO 11135:2014 norms for sterile products for sterile examination gloves.



# GB GYNO<sup>TM</sup>

## ELBOW LENGTH GLOVES

- Material - Natural Rubber Latex
- Hand specific; curved fingers; beaded cuff; natural ; textured surface
- Extractable Protein Level- <200 microgram/ dm<sup>2</sup>
- Sterilization - Ethylene Oxide
- Shelf Life- 3 years from the date of manufacture
- Storage condition- Shall be stored in a cool, dry place and away from sun light



MEDICAL

INDUSTRIAL  
PURPOSE

LAB

HEALTHCARE  
& NURSINGGENERAL  
HOUSEKEEPINGIT  
INDUSTRY

# Sterile/Non Sterile Latex Examination Gloves (Powdered)

GB Examine Sterile and Non Sterile Latex Examination Gloves are made from natural rubber latex. These gloves provide excellent barrier protection for both, healthcare workers and patient.

## FEATURES

- Enhanced elastic, tear strength and donning.
- Beaded cuff with minimum length of 240 mm. It can offer 290 mm length also.
- Powdered with modified Bio-Absorbable corn starch to prevent wound infections and granulomas.

## QUALITY STANDARDS

- Sterilized in a validated process cycle as per ISO 11135:2014 norms for sterile products for sterile examination gloves.

# Sterile/Non Sterile Examination (Powder Free)

Powder free sterile and non sterile latex examination gloves are made of natural rubber latex. These gloves provide excellent barrier protection for both healthcare worker and patients.

## FEATURES

- Enhanced elasticity, tear strength and donning of powderfree gloves.
- Beaded cuff with minimum length of 240mm. It can offer 290mm length also.
- Latex protein is not more than 50ug of protein per dm<sup>2</sup>, eliminates risk of Latex Allergy - Type 1.
- Absence of powder eliminates dangers associated with powder, preventing granulomas, adhesions, fibrosis and occupational asthma.
- It does not contaminate sterile work area.

## QUALITY STANDARDS

- Sterilized in a validated process cycle as per ISO 11135:2014 norms for sterile products for sterile examination gloves.



# GB Disinfectants & Antiseptic Solutions



MEDICAL



INDUSTRIAL  
PURPOSE



LAB



HEALTHCARE  
& NURSING



GENERAL  
HOUSEKEEPING



IT  
INDUSTRY

## Categories:

### Antiseptic

- GB Dine-5%
- GB Dine-7.5%
- GB Dine-10%

### Disinfectants

- GB-Lon



# GB DINE

Povidone Iodine Solution IP

## GB DINE-5%

*(Solution 5% w/v)*

Microbicidal solution

**COMPOSITION:**

Povidone Iodine IP 5% w/v  
(Available Iodine 0.5% w/v)  
Purified water IP.....qs

## GB DINE-7.5%

*Surgical Scrub 7.5% w/v*

Broad spectrum topical microbicidal effective against bacteria, fungi, protozoa, yeasts & viruses.

**COMPOSITION:**

Povidone Iodine IP 7.5% w/v  
(Available Iodine 0.75% w/v)  
Purified water IP.....qs



SALINE SOL.

# GB DINE-10%

*Solution 10% w/v*

Microbicidal solution

**COMPOSITION:**

Povidone Iodine IP 10% w/v  
(Available Iodine 1% w/v)  
Purified water IP.....qs

Topical Antiseptic Cleansing Solution  
Chlorhexidine Gluconate  
Solution 4% w/v

Kill 99% of Germs  
Doctorbath (with Emollient and Moisturizer)  
Colour : Carmoisine Colour

Application/Directions for use:  
Use undiluted

For Antimicrobial Handwashing:  
Deliver 5 ml onto wet hands.  
Wash for 30 seconds with water.  
Rinse thoroughly and dry.

For Surgical Handwashing:  
Repeat the above step and wash for 2 minutes.  
Scrub, Rinse thoroughly and dry with a sterile towel.  
Do not mix with detergents or other chemicals.  
Keep out of eyes and ears. Keep out of reach of children. Contraindicated in case of known hypersensitivity to Chlorhexidine.

For Body Washing/Showering  
Wet body. Deliver sufficient product to work up lather. Wash as usual.  
Rinse thoroughly before drying.



# GB - LON

Chlorhexidine Gluconate Solution  
Cetrimide (Antiseptic Liquid)  
Stronger Formula

Antiseptic Liquid Antiseptic  
Disinfectant liquid for first aid,  
medical & personal hygiene.

## COMPOSITION

Chlorhexidine Gluconate  
Solution IP 0.3% w/v  
Cetrimide IP 0.6% w/v  
Purified Water IP q.s

## USAGES

For all types of First-aid, dilute 1 part (volume) GB-Lon with 15 parts (volume) of clean water. Apply on the wound with cotton swabs.

## WARNING

Please dilute the product based on the recommendations to avoid skin irritation. GB-Lon is effective on all types of minor cuts, bruises & wound. It dose not sting & therefore helps heal without hurting.

## CAUTION

If condition is not improving or in case of any side effect, discontinue use immediately & consult a doctor. Avoid contact with eyes.



A close-up photograph of a person's arm. A hand is holding a white, circular alcohol swab against the skin on the upper arm. The person is wearing a light-colored t-shirt. The background is a solid, warm-toned color.

# GB ALCOHOL SWAB

Alcohol swabs, also known as alcohol prep pads or alcohol wipes, are gauze pads soaked with alcohol. These are the go-to antiseptic wipes for cleaning a patch of skin prior to a needle puncture, injection, or minor pre-operation to prevent infections from bacteria. It may also offer relief from minor wounds.

# ALCOHOL SWAB

# Alcohol Swab

Alcohol swab are used for sanitization and disinfection. It contains a Non-woven cellulose swab saturated with 70% v/v Isopropyl alcohol. It is packed in laminated paper film.



## INSTRUCTIONS

- It is intended to be used for sanitization and disinfection.
- Store in a cool & dry place.
- This device is non-sterile and intended for single use only.
- If this product gets in your eyes, nose, and mouth, immediately wash it with water.

## INDICATIONS

It is a single-use device containing 70% Isopropyl Alcohol used for scrubbing and allowing drying and disinfecting needle access sites before use.

## CONTRA-INDICATIONS

- Do not use on open wounds or sunburned, windburned, dry, chapped, or irritated skin.
- Do not take it by mouth.

## POTENTIAL RISKS

It may over dry the skin and irritate open wounds or sunburned, windburned, dry or chapped skin.

## PRECAUTIONS:

- Do not use it if the primary packaging is damaged.
- Discard the device after a single use or if found leaking.
- Store in a cool & dry place.
- Keep away from naked flame & direct sunlight.
- Keep it away from children's reach.
- Exercise caution while using Alco Swab together with certain vaccines & injectables used for skin tests.



# GB DRIP

To be administered by a professionally competent, qualified medical person or under medical expert guidance only. Use maximal sterile barrier precautions during administration. (These are only the guidelines & hence, refer standard medical text books). Dispose the device after use as bio-medical waste as per applicable laws.

GB DRIP

# GB DRIP Safe

For administering all kinds of Infusions

## SPECIFICATION

- Ø Sterile, single-use, pyrogen-free, gravity feed.
- Ø Bacteria-tight proven air vent, closable with a handy snap cap.
- Ø Soft clear PVC tubing.
- Ø Available in various tubing lengths to any nave patient mobility.
- Ø Advanced precise roller clamp- Good to control flow rate, comfortable to hold.
- Ø Available in Luer Slip with isoprene bulb.
- Ø Standard length 180 cm, DEHP free plasticizer with superior, well documented safety properties.
- Ø Available in various variants as Y-site injection port, Isoprene bulb, Rotating flow diameter.



## GENERAL INSTRUCTIONS

To be administered only by qualified medical personnel under expert supervision, qualified medical person or under medical expert guidance only. Use maximal sterile barrier precautions during administration. (These are only the guidelines & hence, refer standard medical text books). Dispose the device after use as bio-medical waste as per applicable laws.

## MATERIAL OF CONSTRUCTION

- Sharp and easy piercing air vented spike
- Bacteria retention air inlet with snap cap
- Approximately 20 drops/ml

# GB DRIP Safe Pro With Luer Lock Fitting

For administering all kinds of Infusions

## SPECIFICATION

- Ø Sterile, single-use, pyrogen-free, gravity feed.
- Ø Bacteria-tight proven air vent, closable with a handy snap cap.
- Ø Soft clear PVC tubing.
- Ø Available in various tubing lengths to any nave patient mobility.
- Ø Advanced precise roller clamp- Good to control flow rate, comfortable to hold.
- Ø Available in both Luer Slip and **Screw tight Luer Lock fitting**
- Ø Standard length 180 cm, DEHP free plasticizer with superior, well documented safety properties.
- Ø Available in various variants as Y-site injection port, Isoprene bulb, Rotating flow diameter.



## GENERAL INSTRUCTIONS

To be administered only by qualified medical personnel under expert supervision, qualified medical person or under medical expert guidance only. Use maximal sterile barrier precautions during administration. (These are only the guidelines & hence, refer standard medical text books). Dispose the device after use as bio-medical waste as per applicable laws.

## MATERIAL OF CONSTRUCTION

- Transparent & flexible drip chamber
- Soft and kink resistant PVC tubing
- Smooth roller clamp facilitates easy & controlled adjustment of fluid rates



## GB Measure Volume Sets

GB Measured Volume Sets are designed to deliver controlled IV fluid administration with precision—especially critical in neonatal, pediatric, and high-dependency care units. Each set features a calibrated burette chamber for accurate measurement and delivery of fluids, reducing the risk of over-infusion. Manufactured using high-quality, medical-grade materials, these sets are trusted by healthcare professionals across leading institutions. GB Measured Volume Sets embody our commitment to safety, accuracy, and patient care.

GB  
MW  
Sets

# GB Pedia Regular

# GB Pedia Standard

For Intravenous (IV) Administration of Fluids or Medications

## GENERAL INSTRUCTIONS

To be administered by a professionally competent, qualified medical person or under medical expert guidance only. Use maximal sterile barrier precautions during administration. (These are only the guidelines & hence, refer standard medical text books).



## PRECAUTIONS

- Do not use if packing is damaged.
- Do not use if protective caps are loose or missing.
- Use injection site only for injecting medicine.
- Avoid introduction of air bubbles to prevent air embolism.
- Do not resterilize.

## MATERIAL OF CONSTRUCTION

PVC, PP, LDPE, ABS, SS Cannula & Natural Rubber Latex.  
Storage: Store in a cool & dry place.

# GB FLOW Safe

## For Intravenous (IV) Administration of Fluids or Medications

### GENERAL INSTRUCTIONS

To be administered by an expert qualified medical professional.  
Use maximal sterile barrier precautions during administration.  
Catheter has radio-opaque stripes for X-ray visualization.  
For safe combination/attachment to infusion line accessory:  
I.V. Cannula hub is rigid with a 6% luer taper.

<b>Packing Style</b>	◆ 1 Cannula/ Peel Open Blister Pack	<b>Needle Sizes</b>	<b>Colour Code</b>	<b>Catheter Diameter (mm)</b>	<b>Catheter Length (mm)</b>
	◆ 100 Pack/ Mono Box	14 G	Orange	2.10	45
	◆ 50 Pack/ Mono Box	16 G	Grey	1.80	45
	◆ 10 Mono Box/ Shipping Carton	17 G	White	1.50	45
<b>Catheter Material</b>	◆ FEP / PTFE / PU	18 G	Green	1.30	45
		20 G	Pink	1.10	33
		22 G	Blue	0.90	25
		24 G	Yellow	0.70	19
		26 G	Purple	0.60	19



### PRECAUTIONS

- Do not use if packing is damaged.
- Do not use if protective caps are loose or missing.
- Use injection site only for injecting medicine.
- Avoid introduction of air bubbles to prevent air embolism.
- Do not resterilize.

### MATERIAL OF CONSTRUCTION

Polypropylene, Polyoxymethylene, Stainless Steel, Fluorinated ethylene, Ethylene-vinyl acetate propylene- Teflon (FEP), Polyethylene, Silicone , Master Batch.

# EXTENSION LINE

It is used for providing rapid/slowly infusion of fluid into the patient's after attachment with infusion set, The extension tube contains female connector, tubing, Male Luer lock connector, The tubing is manufactured using an extruded via an extrusion process and cut into the required length as per standard ISO 8536-10:2015.

S.No.	VARIANT	BRAND NAME	PRODUCT CODE	COMPONENT	MATERIAL
1	Female luer connector, tubing, Male Luer lock	GB DRIP Drag	GBDRD005	Female Luer Connector	ABS
2	Female luer connector, pressure line tubing, Male Luer lock	GB PMO	GBPMO01	Tube	P.V.C.
3	Female luer connector, pressure line tubing, Male Luer lock and 3 way stop cock	GB DRIP LINE WITH 3 WAY STOP COCK	GBDRL3006	Male Luer Connector	ABS
				3 way stop cock	ABS/PC
4	Female luer connector, pressure line tubing, Male Luer lock and Y- Connector.	GB DRIP LINE WITH Y CONNECTOR	GBDRLY007	Needle free site	ABS/PC





## GB Urology

Our urology range includes high-quality Foley catheters, uro bags, and related accessories. Designed for optimal drainage, patient comfort, and ease of use in clinical settings. Reliable, sterile, and compliant with international standards.

# GB Urology

# GB UroBag

## FEATURES

- Available with handle for easy handling with top outlet
- Capacity: 2000ml, Tube length: 100cm

## PRECAUTIONS

- Keep the bag below your bladder: This prevents urine from flowing back into the bladder, which can lead to infection.
- Empty the bag frequently: Empty the bag when it's almost half full to prevent it from becoming too heavy or causing discomfort.
- Ensure the tubing is kink-free: Kinks can block urine flow and increase the risk of infection.
- Clean the bag regularly and according to your doctor's instructions (e.g., with vinegar and water) to prevent bacterial growth.
- Change the bag when it's damaged, leaking, or smells bad.
- Always wash your hands thoroughly before and after handling the urobag and catheter to reduce the risk of infection.
- Store the bag in a clean and dry place.
- Avoid tugging or pulling on the tubing: This can damage the catheter and tubing.



## GENERAL INSTRUCTIONS

To use a urobag safely, keep the bag below the level of your bladder or hips, empty it frequently (when about half full), and ensure the tubing is kink-free. Regularly clean the urobag, change it when needed, and always wash your hands before and after handling it to prevent infection.

# GB UroBag Plus

## FEATURES

- Available with specially molded handle for easy handling
- T-type bottom outlet for single hand operation and efficient emptying of the bag.
- Available with sampling port for quick & safe collection of urine sample.
- Capacity: 2000ml, Tube length: 100cm

## PRECAUTIONS

- Hand Hygiene: Always wash hands thoroughly with soap and water before and after handling the Urobag Plus.
- Proper Bag Positioning: Ensure the Urobag Plus is always positioned below the level of the bladder to prevent urine backflow and potential complications.
- Regular Emptying: Empty the bag when it's about half full to prevent it from overflowing and to maintain proper drainage.
- Clean Emptying Environment: Empty the bag in a clean bathroom, avoiding contact with dirty surfaces like toilets or counter tops.
- Bag Cleaning: Clean the bag regularly as instructed by your healthcare provider or the manufacturer.
- Avoid Reusing: Do not reuse a bag that has not been properly cleaned, as it can lead to infection.
- Hygiene when disconnecting: If you must disconnect the bag, practice good hygiene by washing hands thoroughly and cleaning the connection before disconnecting.



## GENERAL INSTRUCTIONS

Instructions for using the Urobag Plus include proper handling, cleaning, and maintenance of the urine collection bag to prevent infection and ensure optimal drainage. This includes washing hands before and after bag handling, emptying the bag when it's about half full, and ensuring the bag is always below the level of the bladder to allow for proper drainage.

# GB UroScale

## FEATURES

- Graduated measurement chamber with precise calibrations for accurate hourly urine output monitoring.
- Anti-reflux valve prevents backflow and reduces the risk of ascending infection.
- Large capacity drainage bag ensures extended use without frequent emptying.
- Needleless sampling port allows safe, closed-circuit urine sampling.
- Ergonomic hanger and bed hooks for easy and secure bedside mounting.

## PRECAUTIONS

- Use only under medical supervision – not intended for unsupervised or home use without direction.
- Maintain Sterility – avoid contact with non-sterile surfaces before and during catheter attachment.
- Do not clamp or obstruct tubing as this may lead to inaccurate readings or bladder pressure buildup.
- Discard if package is open or damaged prior to use.
- Replace at recommended intervals or as advised by clinical protocol to avoid risk of infection.



## GENERAL INSTRUCTIONS

- Hang the urometer below bladder level to ensure gravity drainage.
- Connect securely to a Foley catheter without kinking the tubing.
- Monitor hourly output and empty drainage bag as needed using the bottom outlet port.
- Do not allow the measuring chamber to overflow—empty into the bag promptly.
- Always follow hospital protocol for cleaning, maintenance and disposal.

# GB UroSafe

## FEATURES

- Soft, Medical-Grade latex or silicone coating for patient comfort and biocompatibility.
- Inflatable balloon (5–30 mL) ensures secure placement in the bladder.
- Dual/Triple lumen design for drainage and optional irrigation or drug administration.
- Smooth, rounded tip facilitates easy and atraumatic insertion.
- Color-coded valve and funnel for quick size identification and secure connection.

## PRECAUTIONS

- Strictly for single-use – reuse can lead to infection or structural failure.
- Verify balloon integrity by inflating with sterile water before insertion.
- Avoid Overinflation – do not exceed recommended balloon capacity.
- Do not use if packaging is damaged or product appears compromised.
- Monitor for signs of UTI or discomfort and report any issues to medical staff immediately.



## GENERAL INSTRUCTIONS

- Use sterile gloves and aseptic technique during insertion.
- Lubricate the catheter well to minimize patient discomfort.
- Insert until urine flow begins, then advance slightly before inflating the balloon.
- Inflate the balloon slowly with the exact volume recommended on the product label.
- Secure the catheter to the thigh or abdomen to prevent tension or accidental displacement.



## GB Feeding Tubes

GB Feeding Tubes are advanced medical devices designed for the enteral delivery of essential nutrition, fluids, and medications in patients who are unable to ingest food orally. Commonly used across hospitals, ICUs, and long-term care facilities, these tubes offer a safe and reliable method to support recovery and maintain nutritional health.

GB Feeding Tubes are available in a wide range of sizes and specifications to suit diverse clinical needs. Each tube is sterile, easy to handle, and built for optimal patient comfort and accurate placement.

# GB Feeding Tubes

# GB FeedSafe

## Nasogastric Feeding Tube (Adult)

### FEATURES

- Designed for nasogastric nutritional delivery and aspiration of gastric or intestinal contents.
- Closed distal end with four lateral Eyes for smooth, efficient flow and reduced clogging risk.
- Radio-Opaque line and tip with centimeter markings at 50, 60, and 70 cm for accurate placement verification.
- Soft, Kink-Resistant, Non-Toxic PVC Tubing (HEHP Free) enhances patient comfort and safety.
- Color-coded funnel connector for easy size identification; available in sizes 6 FG to 24 FG, 105 cm length.

### PRECAUTIONS

- Always confirm tube placement with a chest X-ray or aspiration before initiating feeds.
- Monitor for signs of misplacement such as coughing, vomiting, bloating, or respiratory distress.
- Perform regular patency checks and observe residual volume before feedings.
- Do not use if package is damaged or if the tube shows signs of wear.
- Secure tube properly to prevent displacement and minimize irritation at the nostril.



24G	Light Blue
22G	Voilet
20G	Yellow
18G	Red
16G	Orange
14G	Green
12G	White
10G	Black
8G	Blue
6G	Light Green

### GENERAL INSTRUCTIONS

- Use aseptic technique for insertion and handling.
- Confirm initial placement radiographically or per clinical protocol before administering feeds.
- Secure the tube using hypoallergenic tape at the nostril and cheek to reduce accidental displacement.
- Flush the tube with sterile water before and after feeding or medication delivery.
- Replace or rotate the tube as per clinical guidelines or signs of blockage.

# GB InfantSafe

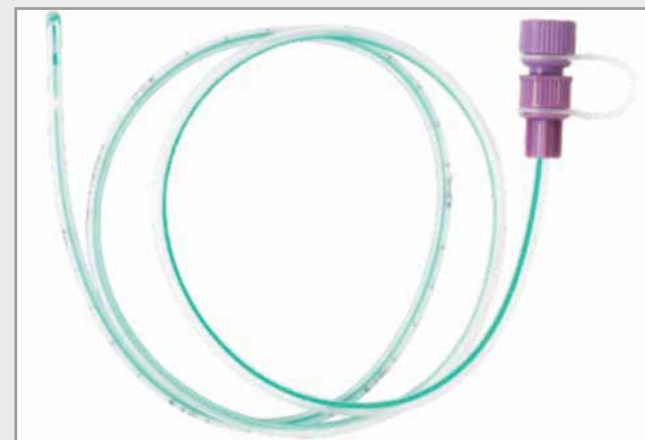
## Feeding Tube for Neonates & Pediatrics

### FEATURES

- Soft, DEHP-Free PVC construction designed for delicate neonatal and pediatric use.
- Smooth, rounded distal tip minimizes trauma during insertion.
- Radio-opaque line ensures accurate placement visibility under X-ray.
- Clear tubing with centimeter markings aids in precise placement and monitoring.
- Available in smaller sizes (5 FG to 10 FG) and shorter lengths for neonatal anatomy.

### PRECAUTIONS

- Confirm tube placement with X-Ray before initial feed or medication administration.
- Use appropriate size and length based on infant's age and weight.
- Closely monitor for respiratory distress or abdominal distension during and after feeding.
- Secure gently but firmly to avoid accidental removal or movement.
- Avoid reuse – single-use only; discard after each patient application.



### GENERAL INSTRUCTIONS

- Ensure hands and equipment are sterile before handling the tube.
- Measure insertion length from nose to ear to mid-epigastrium before placement.
- Confirm position by clinical protocol (e.g., pH test, auscultation, X-ray).
- Flush with sterile water as advised to maintain patency.
- Document placement depth and monitor the child continuously for comfort and tolerance.



## GB BREATHE

GB Breathe is our specialized line of respiratory care devices tailored to meet the needs of patients with compromised lung function or respiratory disorders. Whether used in intensive care units, general wards, or at-home settings, GB Breathe products deliver therapeutic effectiveness with maximum ease and safety.

Each product is engineered for optimal airflow, durability, and patient compliance—making GB Breathe a reliable partner in respiratory health.

GB BREATHE

# GB Lung Exerciser

## FEATURES

- Innovative Three-Ball System designed to improve respiratory function through guided, graded inspiration.
- Ergonomic Handle enables secure grip and stable use during breathing exercises.
- Stepwise Lung Capacity Indicators at 600cc, 900cc, and 1200cc allow progressive training tailored to the patient's capability.
- Fully Dismantlable Design facilitates easy cleaning, disinfection, and hygienic reuse.
- Integrated Tube Holder ensures organized storage of the flexible tubing when not in use.

## PRECAUTIONS

- Consult a Physician Before Use if you have heart conditions, recent surgeries, lung disorders, or a history of barotrauma.
- Avoid Use if Experiencing Ear or Sinus Discomfort, especially after a cold or sinus infection.
- Do Not Hyperventilate – improper technique can cause dizziness or fainting; breathe slowly and as instructed.
- Risk of Lung Collapse (Pneumothorax) in patients with emphysema or chronic lung conditions if used forcefully or incorrectly.
- For Single-Patient Use Only – sharing can lead to infection or cross-contamination.



## GENERAL INSTRUCTIONS

Respiratory exercisers, such as incentive spirometers, should be used with caution and under medical guidance, particularly for individuals with certain conditions or risks. Some key precautions include ensuring proper technique, monitoring for potential side effects, and avoiding overuse or misuse.

# GB Aerosol Mask

## FEATURES

- Soft, Anatomically Designed Mask made from medical-grade, latex-free PVC for enhanced patient comfort.
- Adjustable Elastic Strap for secure fit across a range of face shapes and sizes.
- Universal Connector Port compatible with standard oxygen tubing and nebulizer setups (22 mm OD).
- Transparent Mask Body enables clear visibility of patient's facial expressions and facilitates monitoring.
- Available in Adult and Pediatric Sizes to ensure effective delivery across age groups.

## PRECAUTIONS

- Maintain Minimum Flow Rate of 6–10 L/min to prevent CO<sub>2</sub> rebreathing and associated complications.
- Ensure Reservoir Bag Remains Inflated (for non-rebreather masks) to enable proper oxygen delivery.
- Monitor Patient's Oxygen Saturation and Respiratory Status regularly during use.
- Check for Patient Discomfort – including dryness, claustrophobia, or mask misfit, and adjust accordingly.
- Contraindicated in Certain Cases such as facial trauma, airway obstruction, or intolerance to mask application.



## GENERAL INSTRUCTIONS

- Connect the mask to the oxygen source or nebulizer system using compatible oxygen tubing.
- Place the mask over the patient's nose and mouth, and adjust the strap to ensure a snug fit.
- Set the appropriate oxygen flow rate as per clinical recommendation (typically 6–10 L/min).
- Observe the patient for comfort, oxygen saturation, and mask positioning throughout use.
- Dispose of the mask after single use or as per hospital protocol if it's a single-patient reusable mask.

# GB

## Nasal Cannula

### FEATURES

- Suitable for easy and efficient administration of oxygen.
- Star lumen kink resistant main tube to avoid accidental blockage.
- Soft twin prong tips to ensure equal distribution of oxygen through both air passages which provides maximum patient comfort.
- Tube length: 200 cm
- Sizes : Adult, Paediatric & neonatal

### PRECAUTIONS

- Cleanliness: Regularly clean the nasal cannula, humidifier bottle (if applicable), and other oxygen equipment with soap and water, and disinfect the cannula according to your healthcare provider's instructions.
- Tubing: Check the tubing for blockages or kinks, and change the long tube (connecting to the oxygen supply) monthly.
- Replacement: Replace the cannula prongs (the two pieces in your nose) at least once a week, and the entire cannula every 2-4 weeks, or sooner if you're experiencing a cold.



### GENERAL INSTRUCTIONS

Nasal cannula oxygen therapy requires precautions to ensure safety and effectiveness. These include maintaining cleanliness of the equipment, avoiding sparks, and being aware of potential side effects like skin irritation.

# GB

## Nasal Infant Cannula

### FEATURES

- Suitable for easy and efficient administration of oxygen.
- Star lumen kink resistant main tube to avoid accidental blockage.
- Soft twin prong tips to ensure equal distribution of oxygen through both air passages which provides maximum patient comfort.
- Tube length: 200 cm
- Sizes : Adult, Paediatric & neonatal

### PRECAUTIONS

- Cleanliness: Regularly clean the nasal cannula, humidifier bottle (if applicable), and other oxygen equipment with soap and water, and disinfect the cannula according to your healthcare provider's instructions.
- Tubing: Check the tubing for blockages or kinks, and change the long tube (connecting to the oxygen supply) monthly.
- Replacement: Replace the cannula prongs (the two pieces in your nose) at least once a week, and the entire cannula every 2-4 weeks, or sooner if you're experiencing a cold.



### GENERAL INSTRUCTIONS

Nasal cannula oxygen therapy requires precautions to ensure safety and effectiveness. These include maintaining cleanliness of the equipment, avoiding sparks, and being aware of potential side effects like skin irritation.

# CORPORATE SOCIAL RESPONSIBILITY



At GB House, business has always gone hand-in-hand with purpose. Our commitment to corporate social responsibility is reflected not only in how we operate - with integrity, safety, and sustain ability - but also in how we give back. Through our three flagship initiatives, we invest in people, uplift communities, and champion causes that matter.

## WAMH Foundation

We're All *MAD* Here

*Making A Difference* in Mental Health

Founded during the global pandemic, **WAMH Foundation** emerged as a safe space for young minds navigating the complexities of modern life. With therapist-led support groups, wellness festivals, peer-led conversations, and emotional resilience workshops, WAMH (We're All MAD Here) is a youth-led movement redefining mental health-one conversation at a time. We believe healing happens in community, and every voice deserves to be heard.



## Blind Judo Association

*Strength. Grace. Vision Beyond Sight.*

Through the **Blind Judo Association**, GB House supports visually impaired athletes with courage in their hearts and discipline in their stride. From organizing national judo championships to sponsoring self-defence workshops for women and charity marathons - we stand by those who rise beyond limits. Every tournament, every medal, every mat holds a story of resilience we're proud to help write.

## ESDA, India

Education and Sports Development Association

*Empowering Futures, One Opportunity at a Time*

ESDA is our commitment to holistic development - where education meets athletics, and potential meets opportunity. Through school outreach programs, youth sports camps, and sponsorships of national-level events, ESDA fosters discipline, leadership, and confidence in children and young adults. We believe that sports and learning aren't just tools - they are lifelines to brighter futures.



**GB Equipment –  
“Your Partner On The Road To Reliable Healthcare.”**



Manufacturers of: Medical,  
Automotive & Railway Equipment

✉ [marketing@gbgroup.in](mailto:marketing@gbgroup.in)

☎ +91 7831800800

📍 Office - The GB Group. 16 Ballapur Road,  
Dehradun-248001, Uttarakhand, India



[www.gbgroup.in](http://www.gbgroup.in)



Factory - G.B. Equipment Systems Ltd.  
C-11/2/2, Industrial Area, Selaqui,  
Dehradun-248197, Uttarakhand, India